



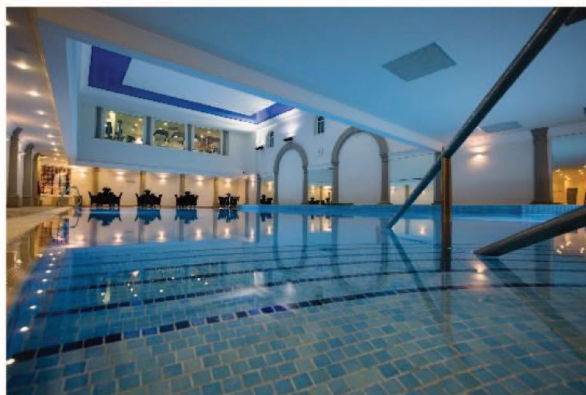
# CARDEN PARK

CHESHIRE'S COUNTRY ESTATE



**INSPIRE YOUR TEAM WITH 1000 ACRES OF THINKING SPACE.**

# EXPLORE THE ESTATE



THE LARGEST INDEPENDENT HOTEL IN THE NORTH WEST

SET WITHIN A 1,000 ACRE ESTATE

AWARD WINNING DINING FROM OUR EXECUTIVE HEAD CHEF,  
GRAHAM TINSLEY MBE

18 MEETING ROOMS

198 NEWLY REFURBISHED BEDROOMS

2 CHAMPIONSHIP GOLF COURSES

DRIVING RANGE

AWARD WINNING HEALTH & BEAUTY SPA

LEISURE FACILITIES

AUDIO VISUAL & EVENT PRODUCTION TEAM ONSITE

TEAM BUILDING & ACTIVITIES INCLUDING:  
QUAD BIKING, ROPES COURSE, SEGWAYS & MORE

FA STANDARD FOOTBALL PITCH

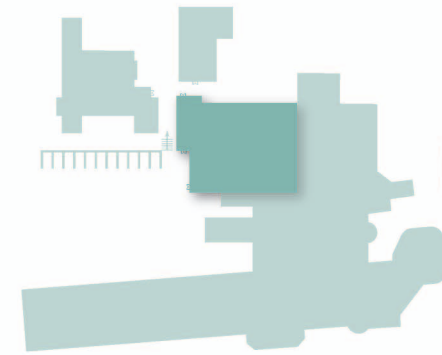
VINEYARD PRODUCING OUR OWN SPARKLING WINE

# RESORT MAP

## KEY:

- |   |                                    |   |                        |
|---|------------------------------------|---|------------------------|
|    | FIRE ASSEMBLY POINT(S)             |  | GOLF PRACTICE GREEN(S) |
|    | PARKING                            |  | 4x4 OFF-ROAD TRACK     |
|    | NO VEHICULAR ACCESS                |  | TENNIS COURTS          |
|    | HOTEL AMENITIES INC:               |  | PLAYGROUND             |
|    | HOTEL RECEPTION                    |  | ARCHERY & AIR RIFLES   |
|    | MORGAN'S BAR                       |  | GOLF DRIVING RANGE     |
|    | REDMOND'S RESTAURANT               |  | SEGWAY TRACK           |
|    | THE VINES RESTAURANT               |  | HIGH ROPES COURSE      |
|    | SPA, SWIMMING POOL & GYM           |  | CRAZY GOLF COURSE      |
|    | CONFERENCE & EVENT SUITES          |   |                        |
|    | BEDROOMS                           |   |                        |
|   | GIFT SHOP & FLORIST AND HAIR SALON |   |                        |
|  | VINEYARD(S)                        |   |                        |





# THE CARDEN SUITE

SELF-CONTAINED SUITE ACCOMODATING UP TO 400 DELEGATES  
THEATRE STYLE OR 360 BANQUET STYLE

SELF-SERVICE BREAKOUT AREA FOR SERVING  
YOUR REFRESHMENTS

BUILT-IN STAGE WITH BACK PROJECTION FACILITY

6,000 FIBRE OPTIC STARLIGHTS TO CREATE THE 'WOW' FACTOR

INTEGRATED MOOD LIGHTING, INTERCHANGEABLE  
TO MATCH YOUR BRAND

9 60" PLASMA TV'S TO SHOWCASE YOUR  
CONFERENCE PRESENTATION

STATE OF THE ART 'BOSE' SOUND SYSTEM

NATURAL DAYLIGHT, AIR CONDITIONING  
& BUILT-IN RIGGING POINTS

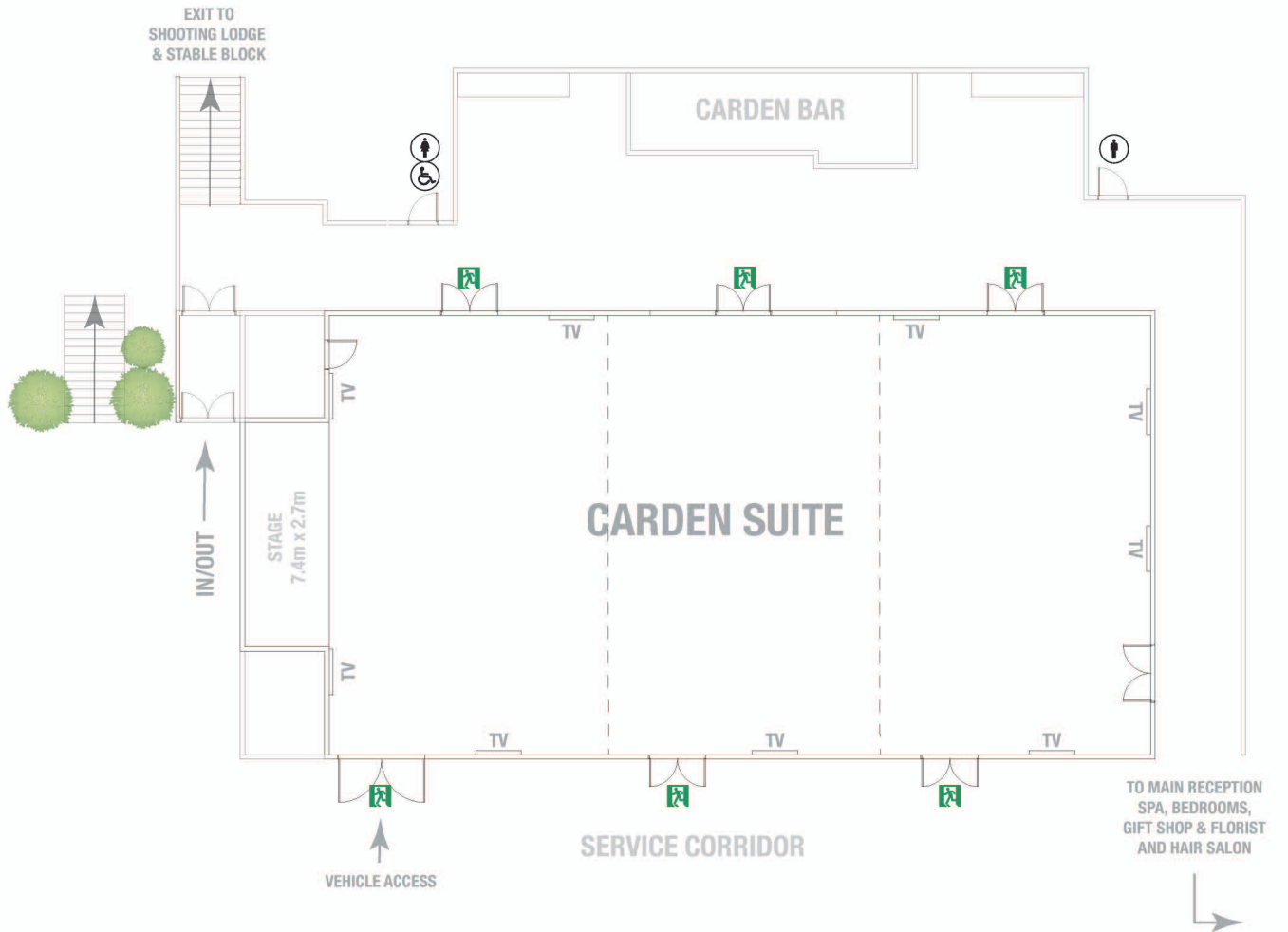
A ROOM WITH VEHICLE ACCESS

# THE GARDEN SUITE ROOM CAPACITIES

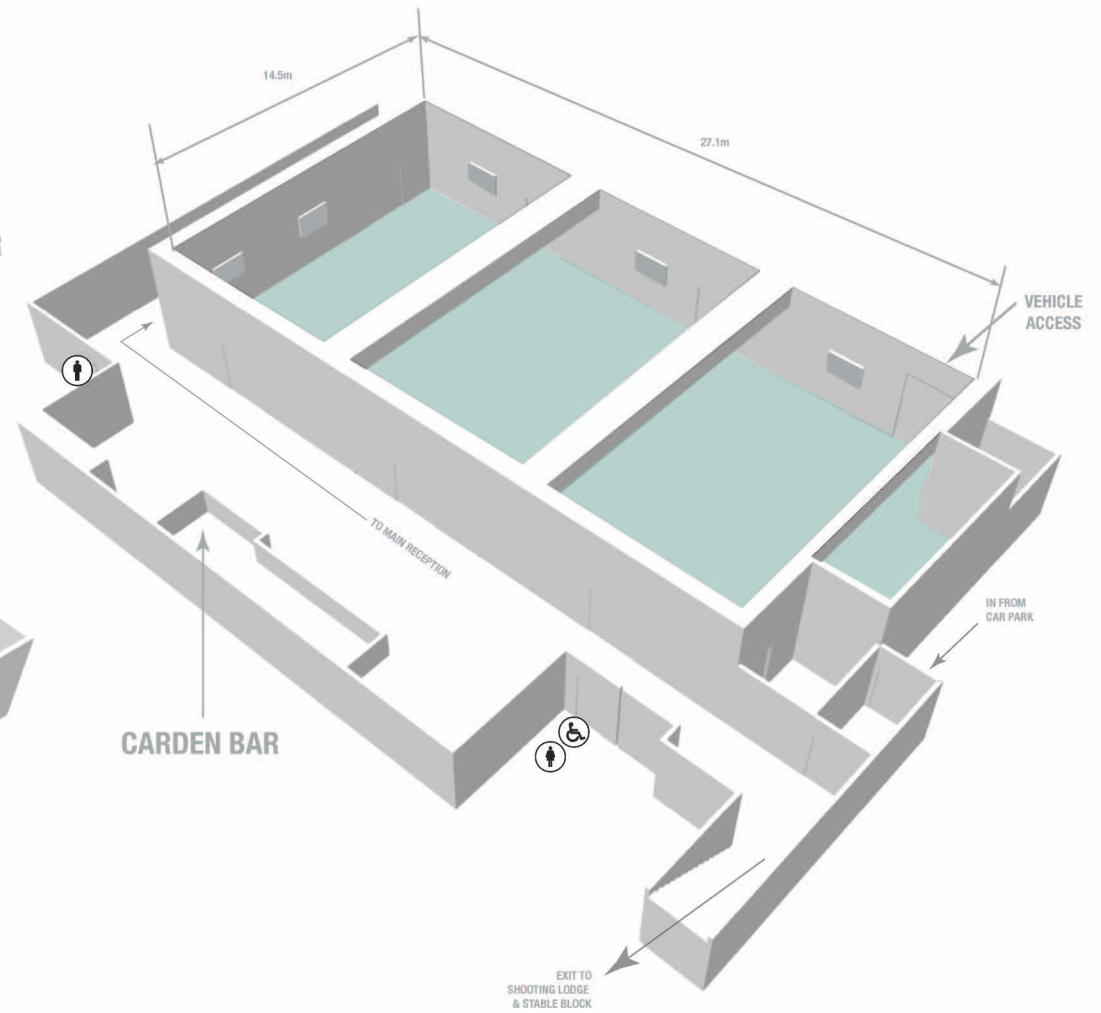
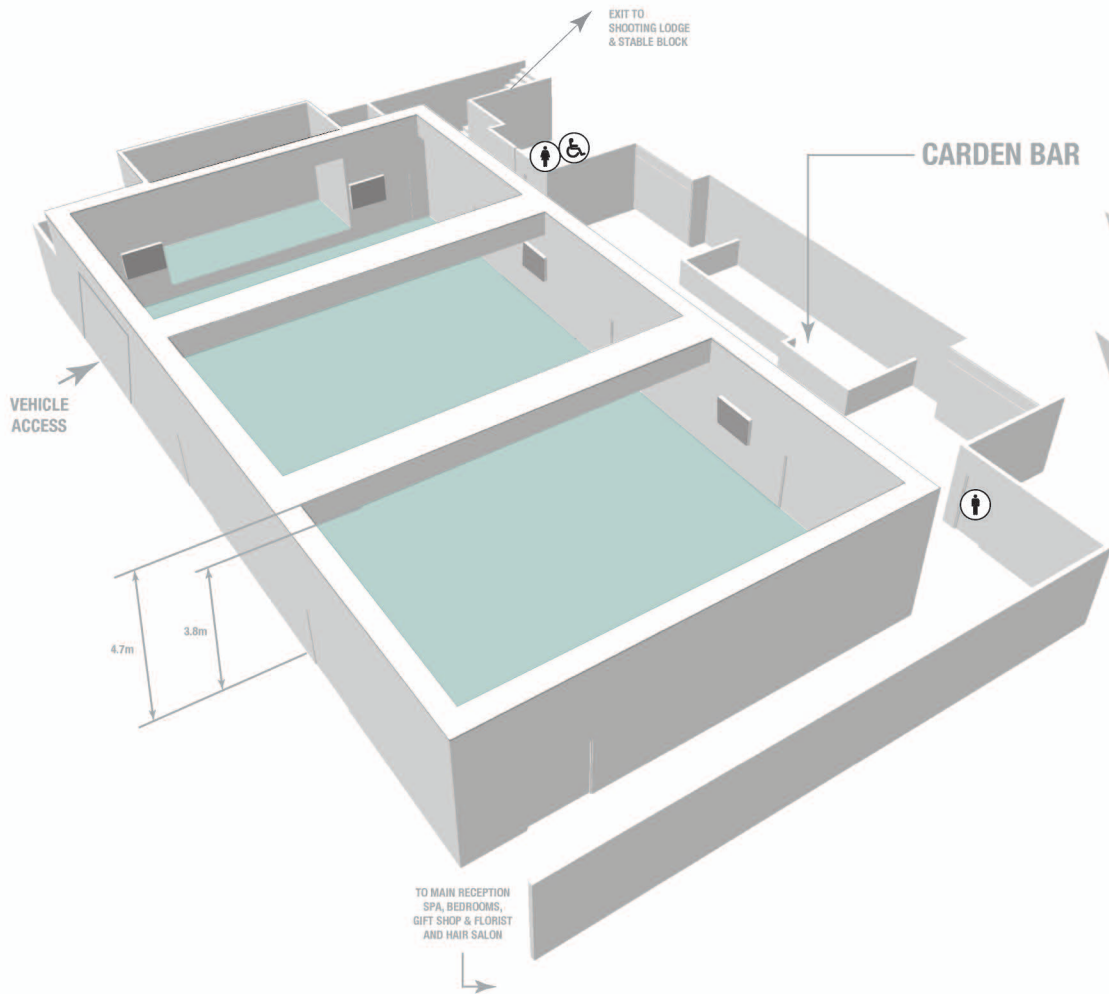
<b>THEATRE</b>	<b>400</b>
<b>CLASSROOM</b>	<b>240</b>
<b>BANQUETING</b>	<b>360</b>
<b>CABARET</b>	<b>280</b>
<b>CABARET (W/ BACK PROJ.)</b>	<b>224</b>
<b>U-SHAPE</b>	<b>90</b>
<b>BOARDROOM</b>	<b>100</b>

## INTERNAL ROOM MEASUREMENTS:

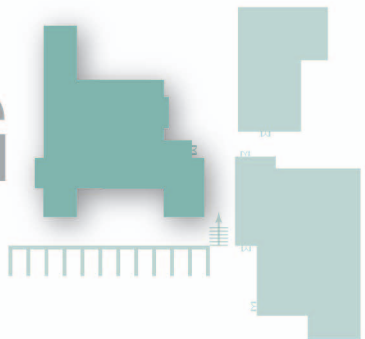
WIDTH : 14.5m  
 LENGTH : 27.1m  
 HEIGHT: 3.8m (LOWEST)  
 4.7m (HIGHEST)



# THE CARDEN SUITE



# THE SHOOTING SUITE



SELF-CONTAINED SUITE ACCOMODATING UP TO 150 DELEGATES  
THEATRE STYLE OR 120 BANQUET STYLE

PRIVATE BREAKOUT AREA FOR REFRESHMENTS OR  
SYNDICATE WORK

PRIVATE BAR, KITCHEN & TERRACE AREA

NATURAL DAYLIGHT

AIR CONDITIONING

A ROOM WITH LOTS OF CHARACTER, FEATURE WOODEN  
BEAMS & FIREPLACE

SEE THE FLOORPLAN ON THE NEXT PAGE >>



# SHOOTING SUITE ROOM CAPACITIES

<b>THEATRE</b>	<b>150</b>
<b>CLASSROOM</b>	<b>70</b>
<b>BANQUETING</b>	<b>120</b>
<b>CABARET</b>	<b>80</b>
<b>CABARET (W/ BACK PROJ.)</b>	<b>64</b>
<b>U-SHAPE</b>	<b>45</b>
<b>BOARDROOM</b>	<b>40</b>

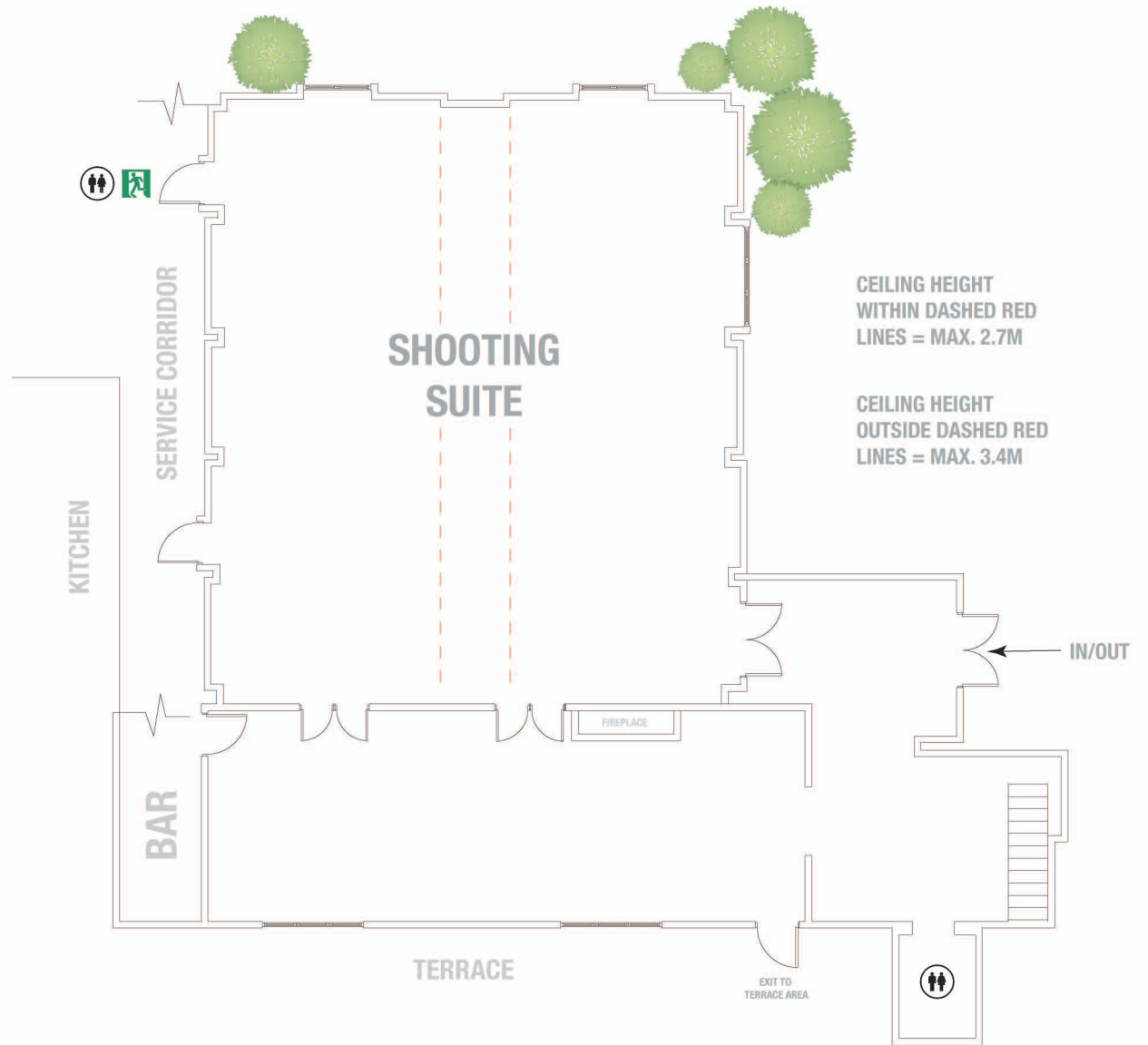
## INTERNAL ROOM MEASUREMENTS:

WIDTH : 11m

LENGTH : 13.5m

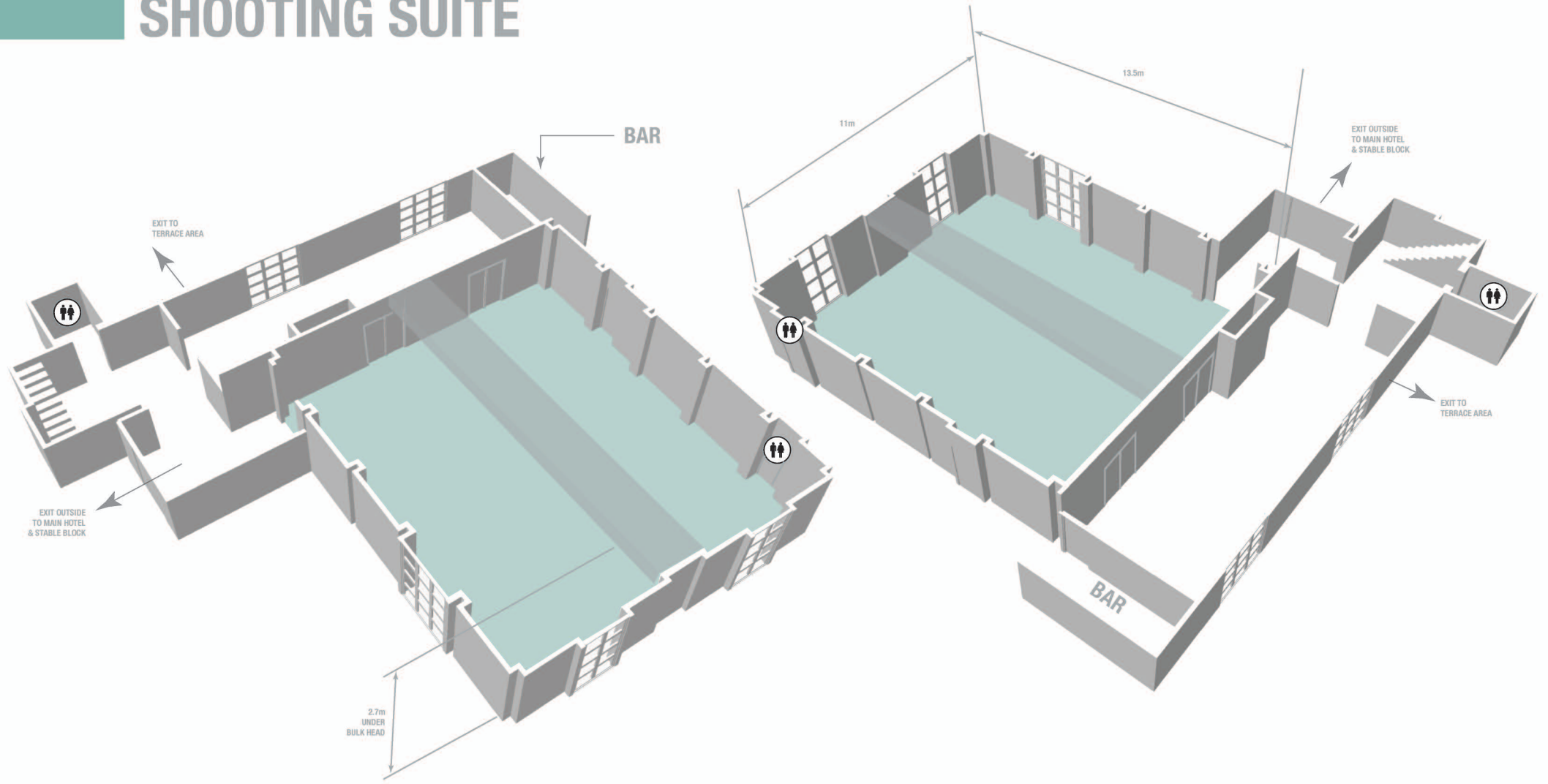
HEIGHT: 2.7m (LOWEST)

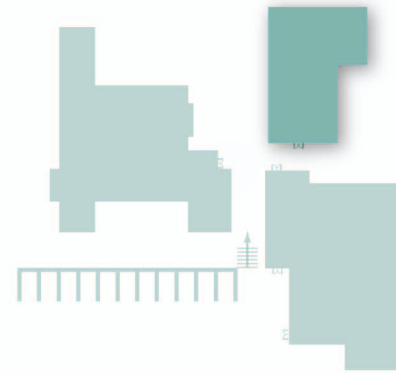
3.4m (HIGHEST)





# SHOOTING SUITE





# THE STABLE SUITES

HOUSING 8 MEETING ROOMS

BOARDROOM LAYOUTS FROM 2-35 DELEGATES

THEATRE STYLE LAYOUTS FROM 10-70 DELEGATES

INTEGRATED SELF-SERVICE COFFEE HUB AREAS

ALL ROOMS FEATURE AIR CONDITIONING & NATURAL DAYLIGHT

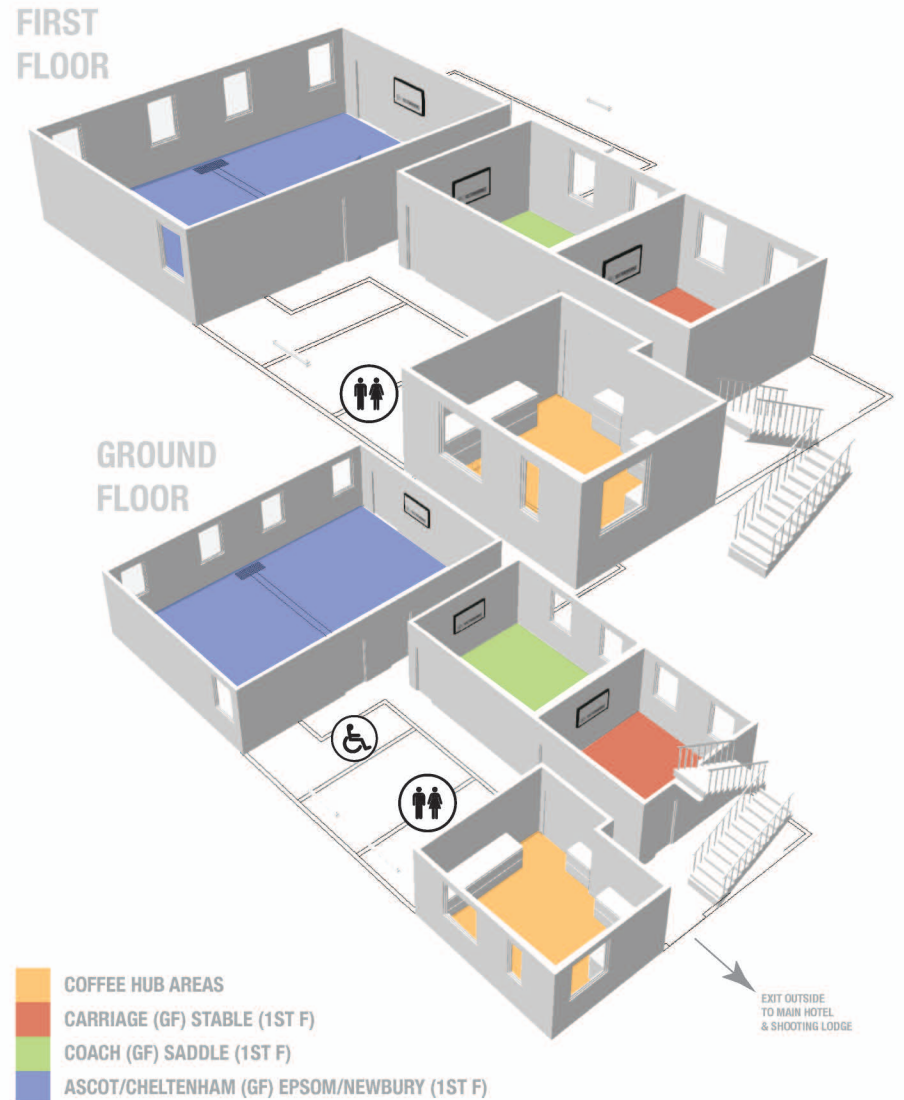
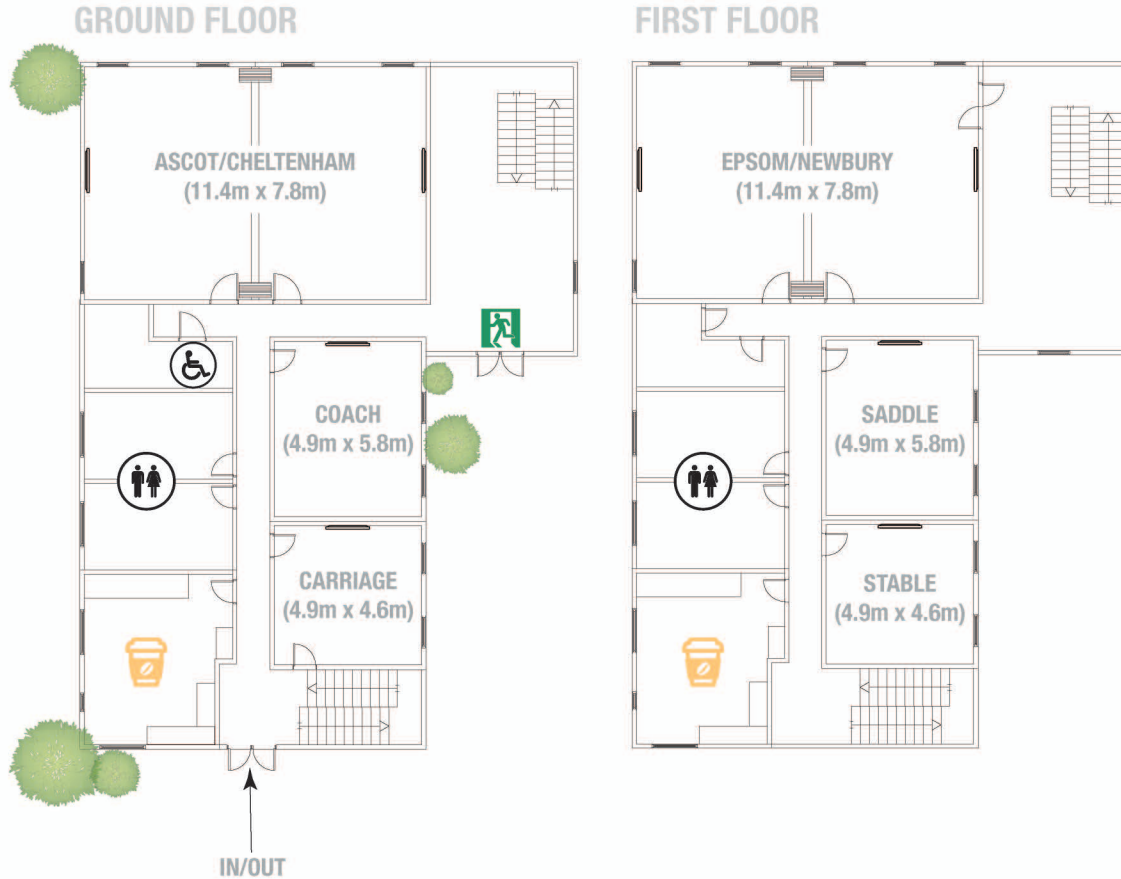
WALL MOUNTED PLASMA TELEVISIONS  
(WITH EASY ACCESS VGA & HDMI PORTS)



SEE THE FLOORPLANS ON THE NEXT PAGE >>

# THE STABLE SUITES

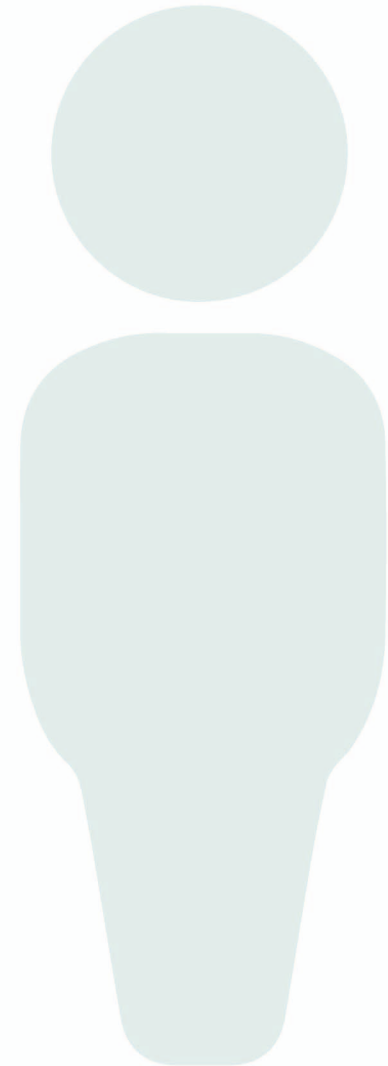
## ROOM CAPACITIES



# THE STABLE SUITES

## ROOM CAPACITIES

		Theatre	Classroom	Cabaret	U-Shape	Boardroom
Ground Floor	Carriage	15	-	-	6	10
	Coach	25	-	-	6	15
	Ascot & Cheltenham	70	40	50	30	40
	Ascot	35	15	16	12	16
	Cheltenham	35	15	16	12	16
First Floor	Stable	15	-	-	6	10
	Saddle	25	-	-	6	15
	Epsom & Newbury	70	40	50	30	40
	Epsom	35	15	16	12	16
	Newbury	35	15	16	12	16



# SUMMARY

## ROOM CAPACITIES FULL LIST

	Theatre	Classroom	Cabaret	Cabaret w/ Back Proj.	Banquet	U-Shape	Boardroom
Carden Suite	400	240	280	224	360	90	100
Tilston Suite (Carden Suite)	120	60	80	60	100	35	40
Barton & Clutton Suite (Carden Suite)	220	140	120	80	240	65	70
Shooting Suite	150	70	80	64	120	45	40
Shooting Lodge	70	-	30	-	30	20	30
Prince Of Wales	20	-	-	-	18	-	14
Carriage	15	-	-	-	-	6	10
Coach	25	-	-	-	-	6	15
Ascot & Cheltenham	70	40	50	-	-	30	40
Ascot	35	15	16	-	-	12	16
Cheltenham	35	15	16	-	-	12	16
Stable	15	-	-	-	-	6	10
Saddle	25	-	-	-	-	6	15
Epsom & Newbury	70	40	50	-	-	30	40
Epsom	35	15	16	-	-	12	16
Newbury	35	15	16	-	-	12	16
Orchard Suite	40	30	40	-	70	-	20
Seventeenth Suite	32	20	40	-	50	-	20
The Clubhouse	70	-	50	-	120	-	30
The Cheshire Suite (The Clubhouse)	30	-	25	-	40	-	20
The Nicklaus Suite (The Clubhouse)	30	-	25	-	40	-	20

The Stable Suites

The Stable Suites



**CARDEN PARK**  
CHESHIRE'S COUNTRY ESTATE

# THE BEDROOMS

198 BEDROOMS WITH CONTEMPORARY BATHROOMS,  
COMPRISING OF TWIN ROOMS, EXECUTIVE ROOMS, COURTYARD  
& LUXURY SUITES

IN ROOM 'ESPA' AMENITIES

INTERNATIONAL CONNECTION PORTS

IN ROOM WORK DESKS

COMPLIMENTARY WIFI

24 HOUR ROOM SERVICE





# HOW TO FIND US



**BY ROAD:** When using SATNAV please enter the postcode, SY14 7HZ.

**FROM THE SOUTH:** Join the M54 at junction 10a, then take the A41 towards Chester.

**FROM THE NORTH:** Leave the M6 at junction 20a, then join the M56 and M53. From the M53, follow onto A55 and follow signs for A41 Whitchurch. Once on the A41, follow the road to Broxton Roundabout where Carden Park Hotel is signposted.

**BY RAIL:** Carden Park is 14 miles from Chester Train Station. Crewe Station is 30 minutes away by taxi.

Chester Train Station - 25 min.  
Manchester Airport - 45 min.  
Liverpool Airport - 35 min.  
London Euston - 2hrs by train



**CARDEN PARK**  
CHESHIRE'S COUNTRY ESTATE